



Replacing Firmware Guide

Why you need to Replace the firmware.

The Snooper box has a memory of all languages (protocols) and other information that will allow you to communicate with vehicles and their active systems.

As a result of using our weekly online updates you will receive new protocols and links which will enable you to access more systems on more vehicles across a broad range of manufacturers. To use these updates and new protocols, the Snooper box needs to be updated from time to time.

Updating the box is called replacing firmware.



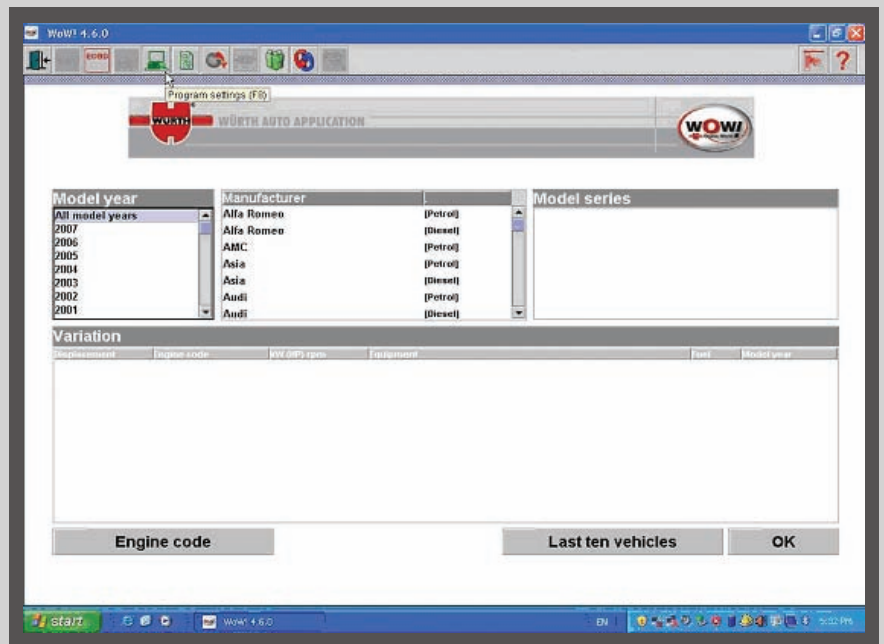


When you first receive the **WOW! Snooper**, you will need to replace the firmware to upload our program and synchronise the Snooper with your computer.

How you do it.

Log into **WOW!** using the user name and codeword provided.

Click the 'Green Computer' at the top for settings.



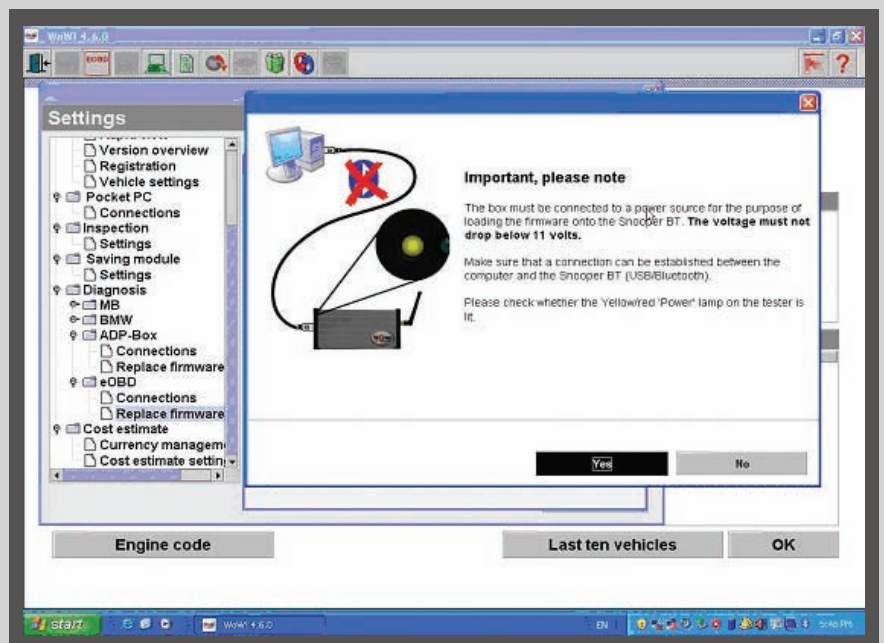
A dialogue box will open giving you several options, select **ADP BOX** from the menu. Open this option by clicking on the small dot to the left of the text.

Click **Replace Firmware**, and a new box will appear.

At this point please make sure that the **Snooper Box** is plugged into the car and the power supply is secure and will not be interrupted.

Click **Yes** to start updating the Snooper box.

Note: updating the firmware can take a while, please be patient. To speed the update process up connect the **USB** cable then click **YES**.



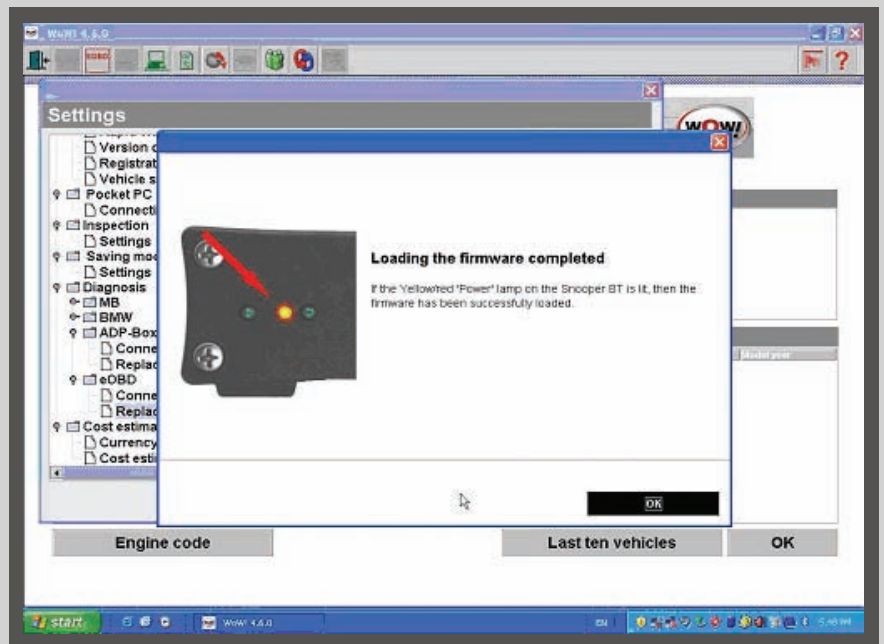


Once the Snooper box has finished updating, the finished message will appear.

Click OK to finish.

Once you have completed the replace firmware under the ADP-BOX, please replace firmware under EOBD.

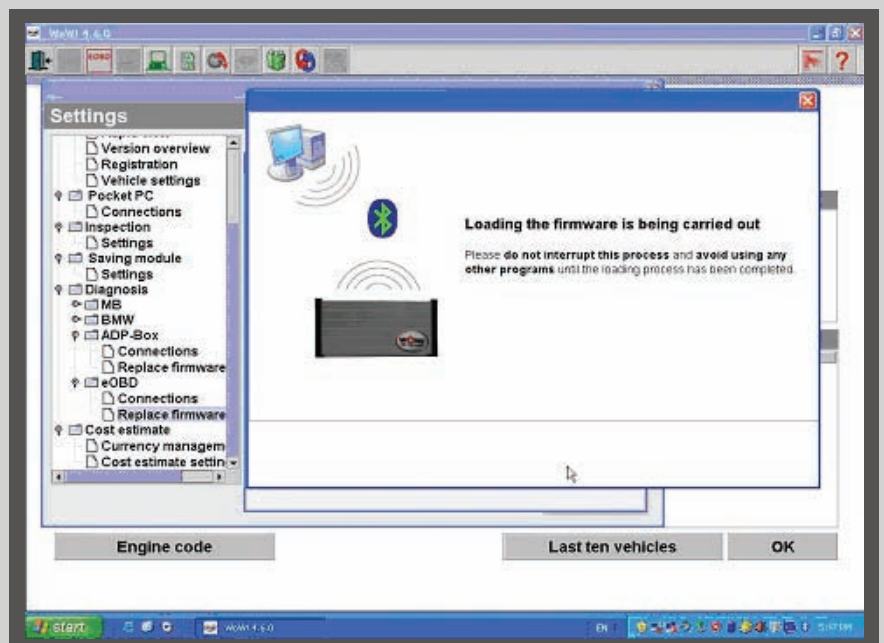
This procedure is carried out in the same way as updating the firmware in the ADP Box.



Click and open up the options under the eOBD section in the menu on the left.

Click Replace Firmware, then follow the instructions as before.

Once you have done this you will be now fully ready to start using your WOW! Snooper BT.





Würth UK Limited
1 Centurion Way
Erith • Kent
DA18 4AE

Tel. 08705 987 841
Fax. 08705 987 842
wow@wurth.co.uk
www.wurth.co.uk

© Würth UK Ltd. All rights reserved in all media.

No part of this catalogue may be reproduced in any form, copied or stored electronically, whole or in part without prior written permission. Every effort has been made to verify all information. Products may vary in appearance from those pictured.

The information expressed is intended as a recommendation only, based on our tests and experience. However, we cannot accept any responsibility for results in individual cases because of the wide variety of applications as well as storage and processing conditions beyond our control. This also applies when making use of our technical and commercial customer service which is supplied free of charge and without obligation. We always recommend that you carry out individual tests. We guarantee the consistent quality of our products. Subject to technical changes and developments.

Würth UK Limited cannot accept responsibility for any errors or omissions or for any losses that may arise as a result.

The Bluetooth® word mark and logos are owned by the Bluetooth SIG, Inc. and any use of such marks by Würth UK Ltd is under license. Other trademarks and trade names are those of their respective owners.