

ANCHOR APPLICATIONS IN THE CONSTRUCTION SECTOR



WÜRTH ANCHOR TECHNOLOGY



Würth anchors deliver the performance you need. With our own R&D and in-house production, we have the expertise to cover every step from the design phase to the final application. With our large team of experts, state-of-the-art production technology and long years of experience, we can guarantee reliable fastening solutions. All of the fastening strength, none of the problems: Würth makes anchor technology easy.

For more information, visit
www.wuerth.de/duebel

- ✓ **Online anchor finder**
- ✓ **Product information**
- ✓ **Approvals, test reports**
- ✓ **Expert seminars**
- ✓ **Anchor hotline**
- ✓ **CAD data**
- ✓ **Anchor knowledge**
- ✓ **Manuals and brochures**

WÜRTH ANCHOR SOFTWARE

Test now to determine your individual fastening dimensions!



- Well-structured user interface to make your work easy
- Instant overview of anchor loads
- Free choice of anchor positions and anchor plate geometries

For more information, visit:
www.wuerth.de/duebel





1 WOOD ON CONCRETE 6 – 7

Fastening wooden beams on concrete
(fastening of sills)

2 POST ON CONCRETE 8 – 9

Fastening post supports on concrete

3 WOOD ON MASONRY 10 – 11

Fastening wooden substructure for facades on masonry

4 REINFORCEMENT ATTACHMENTS 12 – 13

Reinforcement attachment with subsequent mortaring

5 ATTACHMENTS ON MASONRY 14 – 15

Fastening awnings/carports/brackets on masonry

6 DRYWALL CONSTRUCTION 16 – 17

Fastening drywall profiles
Fitting suspended ceilings

7 DRYWALL CONSTRUCTION / INSULATION 18

Fastening in drywalls and facade insulation

8 ACCESSORIES 19

General accessories

Fastening wooden beams on concrete (fastening of sills)



Würth fixing bolt anchor W-FAZ/S

The proven solution for fastening wooden beams on uncracked and cracked concrete



Your benefits

- ▷ Can be loaded immediately
- ▷ High load-bearing capacities
- ▷ Small axial and edge spacing



Fixing bolt anchor W-FAZ/S, galvanized steel

Individual attachments on cracked concrete ETA-99/0011

Anchor dia.	Total length L [mm]	Mounting height t _{fix} [mm]	Width across flats	with large washer		PU/qty.
				Art. no.	Art. no.	
M12	180	85 / 105	Width 19	5928 212 085		25
	200	105 / 125		5928 212 105	5928 312 105	
	220	125		0904 521 217	0904 531 212	
	240	145		0904 521 218	0904 531 213	20
	255	160		0904 521 219	0904 531 214	

Our main catalog contains further dimensions.

Accessories



Torque wrench

Art. no. 0714 71 22

PU/qty. 1



Set of SDS-plus setting tools

Art. no. 0904 908 016

PU/qty. 1

ATTACHMENTS TO MASONRY
DRYWALL CONSTRUCTION
DRYWALL CONSTRUCTION / INSULATION
ACCESSORIES
Würth W-BS concrete screw

Highest performance and flexibility in uncracked and cracked concrete

Your benefits

- ▷ High load-bearing capacities
- ▷ Very small axial and edge spacing
- ▷ Can be processed with tangential impact screwdriver
- ▷ Three anchoring depths



Concrete screw W-BS, galvanized steel with hexagon head						
Individual attachments on cracked concrete ETA-19/0043					with large washer	
Anchor size	Total length L [mm]	Mounting height t_fix [mm]	Width across flats	Art. no.	Art. no.	PU/qty.
10	140	85/6555	Width 15	5929 121 085		25
	160	105/8575		5928 121 105		
	180	125/10595		5929 121 125		
	200	145/125115		5929 121 145		

Our main catalog contains further dimensions.

Accessories

Bitu Roll bitumen sealing tape

Art. no. 0875 631 250

PU/qty. 4


Washer for wood constructions

Art. no. 0459 14

PU/qty. 100/200


Hammer drill bit, SDS-plus Quadro-L Vario

Art. no. 0648 051 226

PU/qty. 2/10


1/2" power socket wrench SW15

Art. no. 0714 13 07

PU/qty. 1


Cordless tangential impact screwdriver ASS 18-1/2 inch HT

Art. no. 0700 725 4

PU/qty. 1


Cordless hammer drill H 28-MAS

Art. no. 5700 801 3

PU/qty. 1


1/4 + 1/2" socket wrench assortment

Dust-proof ratchet, 59 pcs.

Art. no. 0965 090 590

PU/qty. 1


Mounting block set

Art. no. 0875 604 000

PU/qty. 1

Find more accessories on page 19

Fastening post supports on concrete

**Würth fixing bolt anchor W-FAZ**

Tried and tested attachment in
cracked and non-cracked concrete

**Your benefits**

- ▷ Reliable and safe assembly
- ▷ High load-bearing capacities
- ▷ Small axial and edge spacing

**Fixing anchor W-FAZ****Individual attachments on cracked concrete ETA-99/0011**

Anchor dia.	Total length L [mm]	Mounting height t_fix [mm]	Width across flats	Art. no. Steel galv.	Art. no. A4	PU/qty.
M10	95	15 / 35	Width 17	5928 210 015	5928 410 015	50
	110	30 / 50		5928 210 030	5928 410 030	

Würth W-BS concrete screw

Highest performance and flexibility
in uncracked and cracked concrete

**Your benefits**

- ▷ Very small axial and edge spacing
- ▷ Very quick installation
- ▷ Adjustment possible after assembly

**Concrete screw W-BS type S, hexagon head****Individual attachments on cracked concrete ETA-16/0043**

Anchor dia.	Total length L [mm]	Mounting height t_fix [mm]	Width across flats	Art. no. Steel galv.	Art. no. A4	PU/qty.
W-BS 8	70	5/15/25	Width 13	5929 128 025	5929 228 025	50
	80	15/25/35		5929 128 035	5929 228 035	

Our main catalog contains further dimensions.

ATTACHMENTS TO MASONRY
DRYWALL CONSTRUCTION
DRYWALL CONSTRUCTION / INSULATION
ACCESSORIES
**Chemical injection mortar
Multi WIT-UH 300 concrete**

Flexible composite mortar
for cracked and uncracked concrete


280 ml
Art. no. 5918 504 280

PU/qty. 1/12

Can be processed with normal silicon application gun.


320 ml
Art. no. 5918 500 320

PU/qty. 1/12

420 ml
Art. no. 5918 500 420

PU/qty. 1/12

Your benefits

- ▷ Hardened injection mortar largely seals off the drill hole
- ▷ Variable anchoring depths in concrete
- ▷ For use in anchoring base at temperatures between -5°C and $+40^{\circ}\text{C}$
- ▷ Ambient temperature when fully cured -40°C to $+160^{\circ}\text{C}$
- ▷ Processing with threaded rod (acceptance test certificate 3.1)

Threaded rod (by the meter) with acceptance test certificate 3.1

Diameter	Total length L [mm]	Drill nominal dia. d [mm]	Art. no. Steel galv. 5.8	Art. no. A4	PU/qty.
M8	1000	10	5916 008 999	5916 108 999	10
M10		12	5916 010 999	5916 110 999	10
M12		14	5916 012 999	5916 112 999	10

Our main catalog contains further dimensions.

Accessories

Ratchet combination wrench assortment, 6 pcs.
Art. no. 0714 263 50

PU/qty. 1


Application gun, WIT
Art. no. 0891 003

PU/qty. 1


Post support bracket D-D-H/A2K
Art. no. 0681 491 140

PU/qty. 6


Static mixer WIT-UH
Art. no. 0903 488 102

PU/qty. 20


1/2 inch power socket wrench, metric, hexagon, short
Art. no. 0714 13 05

PU/qty. 1


Cordless tangential impact screwdriver ASS 18-Combi EC
Art. no. 5700 510 2

PU/qty. 1


Extraction drill bit SDS-plus
Art. no. 0648 451 027

PU/qty. 1


Protective glove Multifit Nitril Plus
Art. no. 0899 405 309

PU/qty. 6


Ear plugs x-100
Art. no. 0899 300 342

PU/pair 50


Wet and dry vacuum cleaner ISS 35-M, automatic
Art. no. 0701 138 1

PU/qty. 1

WOOD ON CONCRETE

POST ON CONCRETE

WOOD ON MASONRY

**CONNECTING
REINFORCEMENT**

**Fastening wooden substructure for
facades on masonry**



W-UR plastic frame-fixing anchor

The versatile frame anchor in different diameters, clamping strengths and head shapes



Your benefits

- ▷ Approved for numerous substrates
- ▷ Highest load-bearing capacity among all plastic anchors
- ▷ Through-bolt mounting possible.



Plastic frame anchor W-UR 10				
Multiple attachment in concrete and masonry ETA-08/0190				
Anchor dia.	Total length L [mm]	Mounting height t_fix [mm]	Art. no.	PU/qty.
W-UR 10	115	45	0912 810 403	50
	135	65	0912 810 404	
	160	90	0912 810 405	
	185	115	0912 810 406	
	200	130	0912 810 407	
	230	160	0912 810 408	



Plastic frame anchor W-UR 8				
Multiple attachment in concrete and masonry ETA-08/0190				
Anchor dia.	Total length L [mm]	Mounting height t_fix [mm]	Art. no.	PU/qty.
W-UR 8	80	10/30	0912 808 403	50
	100	30/50	0912 808 404	
	120	50/70	0912 808 405	
	140	70/90	0912 808 406	

Our main catalog contains further dimensions.

Accessories



**MFD-S SDSplus
multi-purpose drill bit**
Art. no. **0641 231 026**
PU/qty. 1



**Bit holder assortment
for hammer drill**
Art. no. **0614 100**
PU/qty. 1



Bit AW 40
Art. no. **0614 514 0**
PU/qty. 10

Find more accessories on page 19

Reinforcement attachment
with subsequent mortaring

Chemical injection mortar WIT-VM 250, Rebar

330 ml

Art. no. 0903 450 202 PU/Qty. 1/12

420 ml

Art. no. 0903 450 205 PU/Qty. 1/12

825 ml

Art. no. 0903 450 206 PU/Qty. 1/8

Your benefits

- ▷ Fast curing
- ▷ Flexible and reliable subsequent reinforcement attachment
- ▷ For use in anchoring base at temperatures between -10°C and $+40^{\circ}\text{C}$
- ▷ Many applications possible, ETA for anchoring in cracked and non-cracked concrete, solid and hollow bricks, aerated concrete.



Accessories



Injection adapter Rebar for WIT-VM 250

Prevents the formation of air bubbles during filling of the drill hole.

for reinforcement bar diameters [mm]	Drill nominal dia. d0 [mm]	Art. no.	PU/qty.
10	14	0903 488 055	10
12	16	0903 488 056	10
16	20	0903 488 058	10
20	25	0903 488 059	10



Cleaning brush for Rebar

Connecting thread M8

for reinforcement bar diameters [mm]	Drill nominal dia. d0 [mm]	Art. no.	PU/qty.
10	14	0903 489 010	1
12	16	0903 489 012	
16	20	0903 486 016	
20	25	0903 489 020	

Find more accessories on page 19



REBAR cleaning brush gauge

Art. no. 0903 489 099

PU/qty. 1



Machine chuck SDS-plus

Art. no. 0903 489 101

PU/qty. 1



Extension for cleaning brush

Art. no. 0903 489 111

PU/qty. 1

Chemical injection mortar WIT-PE 500, Rebar

385 ml

Art.no. 0903 480 004 PU/Qty. 1/12

585 ml

Art.no. 0903 480 005 PU/Qty. 1/12

Your benefits

- ▷ Approved overall system for Rebar diameter 8 to 28 mm
- ▷ Long application time – for high temperatures and great anchoring depths



Injection adapter Rebar for WIT-PE 500

Prevents the formation of air bubbles during filling of the drill hole.

for reinforcement bar diameters [mm]	Drill nominal dia. d0 [mm]	Art. no.	PU/qty.
10	14	0903 488 010	20
12	16	0903 488 012	
16	20	0903 488 016	
20	25	0903 488 020	10



Infra-red laser thermometer

Art. no. 0715 53 110

PU/qty. 1

Mixing extension, flexible

Art. no. 0903 488 123

PU/qty. 10



Cordless application gun, 825ml

Art. no. 0891 003 825

PU/qty. 1



Application gun WIT-MULTI

Art. no. 0891 003 105

PU/qty. 1



System case for WIT-REBAR

Art. no. 0964 903 480

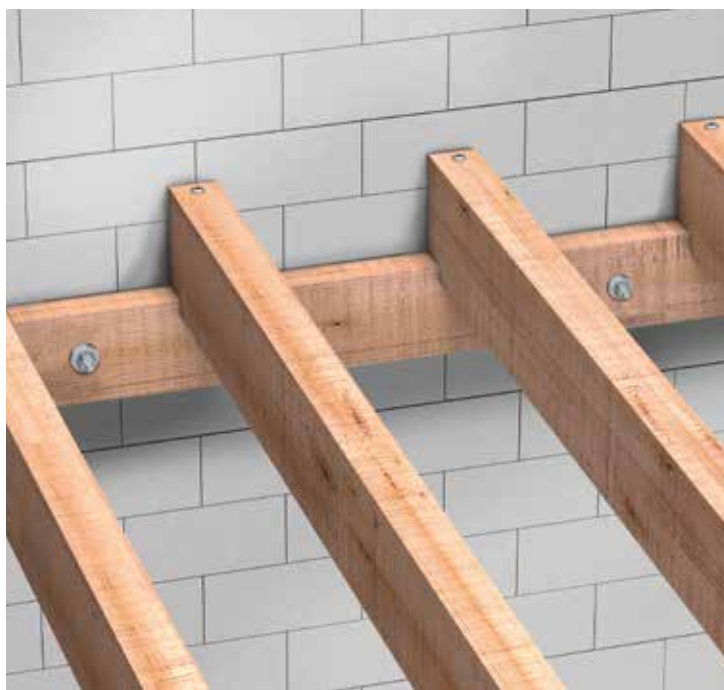
PU/qty. 1

WOOD ON CONCRETE

POST ON CONCRETE

WOOD ON MASONRY

CONNECTING REINFORCEMENT



Injection mortar

WIT-VM 250 – the all-rounder

Composite mortar with extremely wide range of applications for solid and hollow brick masonry or aerated concrete



330 ml

Art. no. 0903 450 202 PU/Qty. 1/12

300 ml

Art. no. 0903 450 201 PU/Qty. 1/12

Can be processed with normal silicon application gun

Your benefits

- ▷ Styrene-free
- ▷ For use in anchoring base at temperatures between -10°C and +40°C
- ▷ Universally applicable, ETA also for anchoring in cracked and uncracked concrete, and subsequent reinforcement connection

Anchor rod W-VI-A



Anchor rod W-VI-A						
Galvanized steel 5.8 and stainless steel A4						
Anchor dia.	Total length L	Mounting height t_fix [mm]	Anchoring depth h_ef [mm]	Art. no. Steel galv.	Art. no. A4	PU/qty.
M10	110	15/10*	85/90*	0905 461 011	0905 471 011	10
	130	35/30*	85/90*	0905 461 012	0905 470 012	
	150	55/50*/10	85/90*/130	0905 461 013	0905 470 013	
	165	70/65*/25	85/90*/130	0905 461 014	0905 470 014	
M12	155	55/40*/10	85/100*/130	0905 461 212	0905 471 212	
	175	75/60*/30	85/100*/130	0905 461 213	0905 471 213	
	210	110/95*/65	85/100*/130	0905 461 214	0905 471 214	

*in solid brick only

Our main catalog contains further dimensions.

SH sieve sleeve



SH sieve sleeve					
Designation	Drill nominal dia. d0 [mm]	Anchoring depth h_ef [mm]	Anchor rod	Art. no. Steel galv.	PU/qty.
SH16x85	16	85	M8 and M10	0903 44 164	20
SH16x130		130	M8 and M10	0903 44 165	
SH20x85	20	85	M12 and M16	0903 44 203	
SH20x130		130	M12 and M16	0903 44 204	

Accessories



Suction bell

Art. no. 0903 990 010

PU/qty. 1



HandyMax application gun

Art. no. 0891 007

PU/qty. 1

ATTACHMENTS TO MASONRY

DRYWALL CONSTRUCTION

DRYWALL CONSTRUCTION / INSULATION

ACCESSORIES

Fastening awnings/carports/brackets on masonry



Chemical injection mortar WIT-PM 200

Attractively priced compound mortar with approval for masonry

Your benefits

- ▷ Styrene-free
- ▷ Can be processed with normal silicon application gun.



150 ml
Art. no. 5918 241 150
 PU/qty. 1/12

300 ml
Art. no. 5918 242 300
 PU/qty. 1/12



Torque wrench

1/4" 1-5 Nm

Art. no. 0714 71 19

PU/qty. 1



MFD-S SDS-Plus multi-purpose drill bit

Especially for masonry AL 200

Ø10 **Art. no. 0641 231 026**

Ø12 **Art. no. 0641 231 226**

Ø12 **Art. no. 0641 231 226**

Ø20 **Art. no. 0641 232 026**

PU/qty. 1



Handle

Art. no. 0905 499 103

PU/qty. 1



Blow-out pump

Art. no. 0903 990 001

PU/qty. 1



Cleaning brush for masonry

Connecting thread M8

for external diameters	Drill nominal dia. d0 [mm]	Art. no.	PU/qty.
M10	12	0905 499 022	1
M12	14	0905 499 023	
SH 16 (M8+M10)	16	0905 499 025	
SH 20 (M12+M16)	20	0905 499 026	

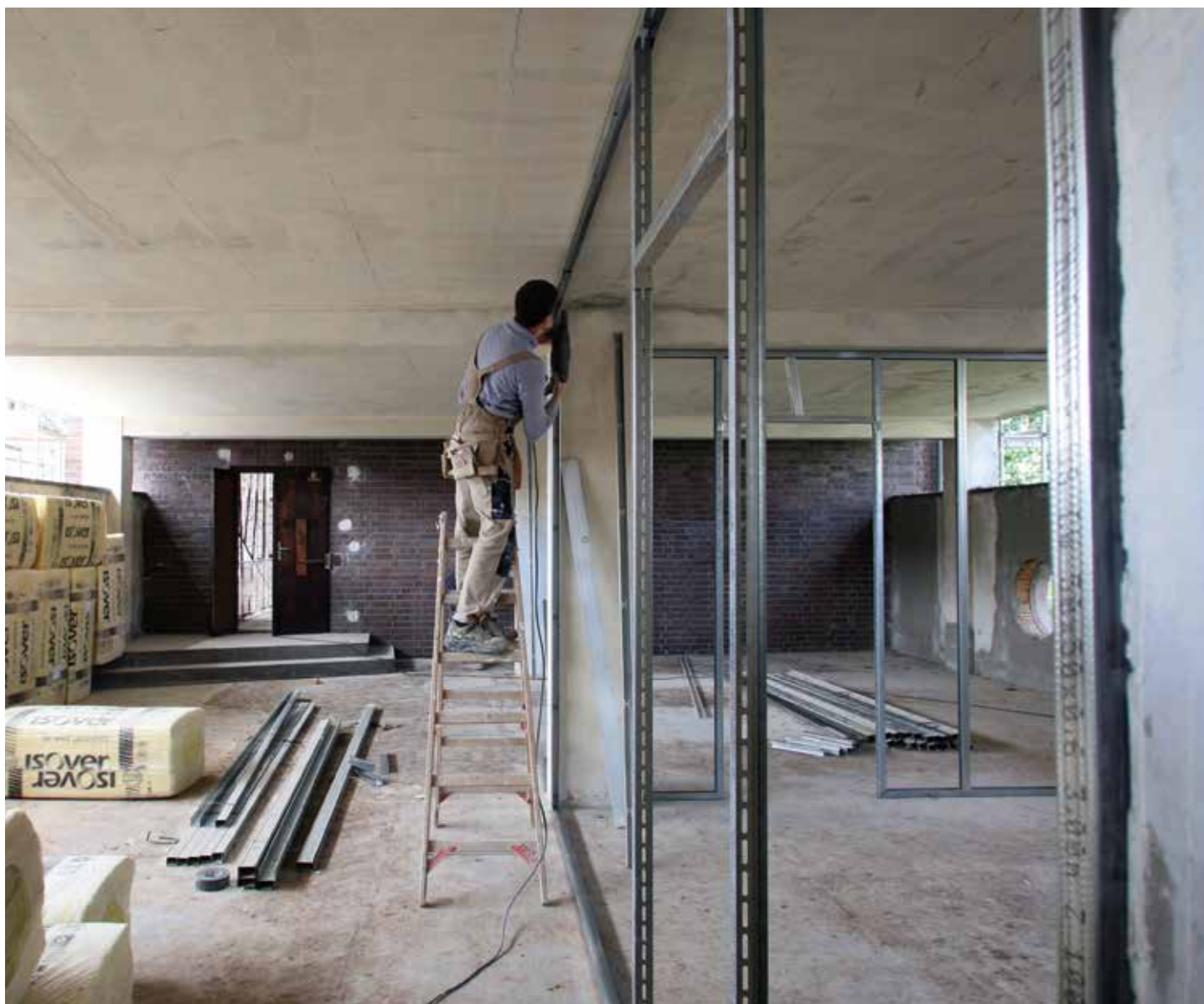
Find more accessories on page 19

WOOD ON CONCRETE

POST ON CONCRETE

WOOD ON MASONRY

**CONNECTING
REINFORCEMENT**



Nail anchor W-ZND type FK 6x40

Art. no. 0906 306 40

PU/qty. 200



Your benefits

▷ Quick and inexpensive installation

Nail anchor FK 6x40 for drywall construction

Art. no. 0903 760 400

PU/qty. 1,000

Our main catalog contains further dimensions.

Accessories

Hammer drill SDS-plus Quadro-L Vario

Art. no. 0648 056 016

PU/qty. 2/1050



Cordless hammer drill H 18-MA Compact 2x4Ah

Art. no. 5700 502 2

PU/qty. 1



ATTACHMENTS TO MASONRY

DRYWALL CONSTRUCTION

DRYWALL CONSTRUCTION / INSULATION

ACCESSORIES

Fastening drywall profiles fitting suspended ceiling

Concrete screw, W-BS Compact

Multiple attachment of non-load-bearing systems in concrete

Your benefits

- ▷ Fast and easy mounting – can be assembled manually and with drill screwdriver
- ▷ Low drill hole depth – it is avoided that reinforcement is hit
- ▷ Time and cost-saving mounting



Art. no. 5929 506 028

PU/qty. 100



Nail anchor W-NA-K 6x39

Multiple attachment of non-load-bearing systems in concrete:

Your benefits

- ▷ Quick and easy mounting
- ▷ Less drilling required thanks to reduced anchorage depth of 25 mm
- ▷ Very low edge and axial clearances possible



Art. no. 0905 361 005

PU/qty. 200



Ceiling nail W-DN-K 6x40

Multiple attachment of non-load-bearing systems in concrete:

Art. no. 0905 364 5

PU/qty. 200



Accessories



TX bit 30 70mm

Art. no. 0614 333 0

PU/qty. 1/5



Cordless drill screwdriver BS 14-A EC Compact

Art. no. 5700 407 2

PU/qty. 1



Rotation laser RL 5-14

Art. no. 5709 300 305

PU/qty. 1



Aluminium elevator tripod

Art. no. 0714 649 303

PU/qty. 1

Find more accessories on page 19

WOOD ON CONCRETE

POST ON CONCRETE

WOOD ON MASONRY

CONNECTING REINFORCEMENT



Gypsum plasterboard anchor W-GS ZD 14.5x33

Art. no. 0903 252 1
PU/qty. 200



Your benefits

- ▷ When unscrewing the screw, the gypsum plasterboard plug does not turn back (twist lock)
- ▷ Very little space required behind sheet
- ▷ For processing without setting tool, with cordless screwdriver and suitable bit for the relevant screw

Gypsum plasterboard anchor assortment W-GS

Art. no. 5964 090 301
PU/qty. 1



**Metal cavity anchor
W-MH assortment**
Art. no. 5964 090 300
PU/qty. 1



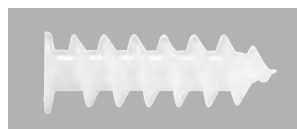
Cavity anchor W-HR M6
Art. no. 0904 720 6
PU/qty. 50



Insulation anchor W-ID 18 x 50 mm

Art. no. 0903 500 50
PU/qty. 100

30x95mm
Art. no. 0903 500 95
PU/qty. 25



Your benefits

- ▷ Fast and inexpensive attachment
- ▷ Can be installed with cordless screwdriver
- ▷ No thermal bridges



Our main catalog contains further dimensions.

Amo® light 10x200mm
Art. no. 0912 810 617
PU/qty. 50



Insulation anchor W-ID easy
**Quick, easy and efficient fastening
in facade insulation**

Art. no. 0903 500 910
PU/qty. 100



ATTACHMENTS TO MASONRY

**DRYWALL
CONSTRUCTION**

**DRYWALL CONSTRUCTION/
INSULATION**

ACCESSORIES

**Fastening in drywalls and
facade insulation**

**General
information**

General accessories



SDS-plus hammer drill bit
Art. no. 0648 051 226



**Hammer drill SDS plus
with extraction**
Art. no. 0648 401 232



Multi-purpose drill bit
Art. no. 0641 231 221



Cordless hammer drill
Art. no. 5700 801 3



Digital calliper
Art. no. 0715 76 111



Hammer drill, electric
Art. no. 5708 204 1



**Protective glove
special design**
Art. no. 0899 400 749



Safety glasses
Art. no. 0899 102 115



Ear defenders
Art. no. 0899 300 353



Disposable breathing mask
Art. no. 0899 110 501



Position finder
Art. no. 5709 300 800



Line laser
Art. no. 5709 300 020



Light-metal spirit level
Art. no. 0714 644 008



Blow-out pump
Art. no. 0903 990 001

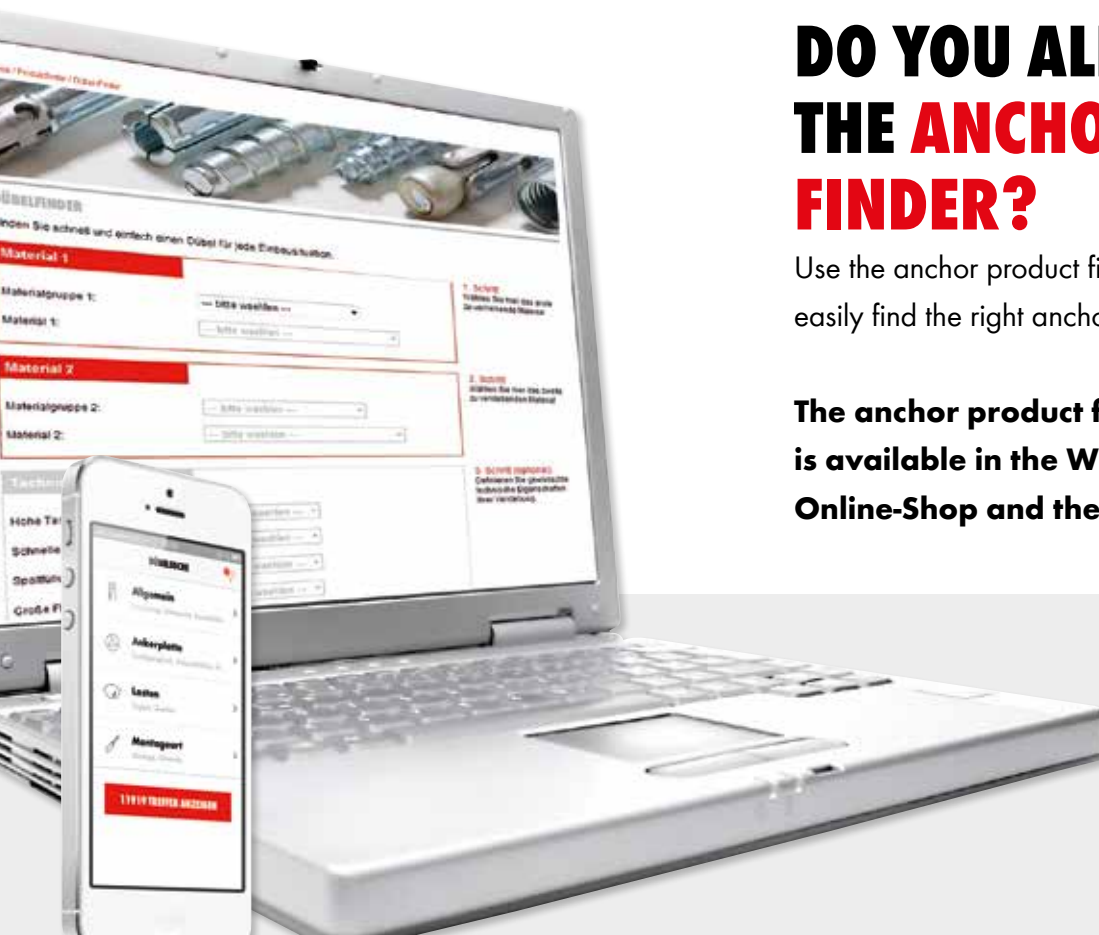
ANCHOR APPLICATIONS IN THE CONSTRUCTION SECTOR

Adolf Würth GmbH & Co. KG
74650 Künzelsau
T +49 7940 15-0
F +49 7940 15-1000
info@wuerth.com
www.wuerth.de

© by Adolf Würth GmbH & Co. KG
Printed in Germany.
All rights reserved.
Responsible for the content:
Dept. IDC/Andreas Hauf
Editorial staff:
Dept. MWC/Jörg Rathfelder

Reproduction, in whole or in part,
without prior approval is strictly prohibited.
SBRO040781-MWC-100595-03/17
Printed on environmentally friendly paper.

We reserve the right to make any changes we deem necessary to improve the quality of a product, even without prior announcement or notification. Illustrations include sample illustrations and may differ in appearance from the actual goods delivered. Errors excepted. We do not accept any liability for printing errors. Our general terms and conditions apply.



DO YOU ALREADY KNOW THE ANCHOR PRODUCT FINDER?

Use the anchor product finder and you will quickly and easily find the right anchor for your specific application.

The anchor product finder
is available in the Würth
Online-Shop and the Würth App.

