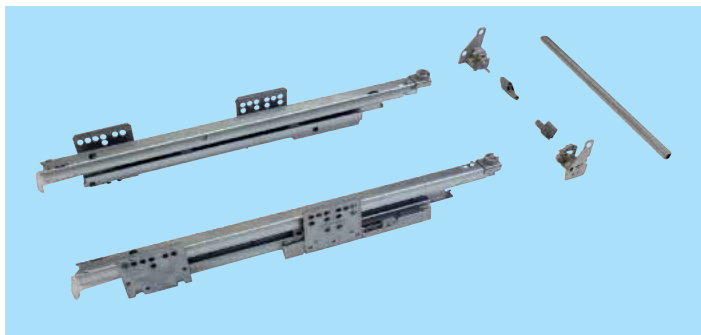
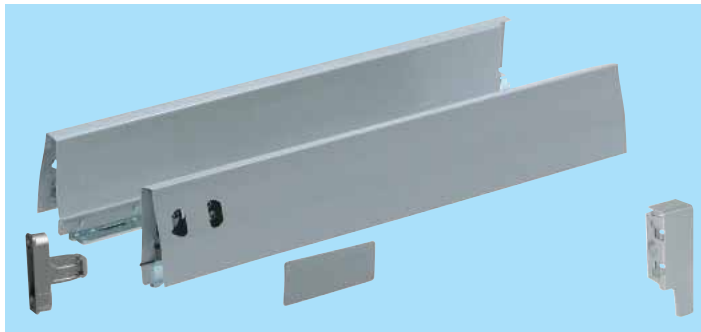




DWD XP Tipmatic Plus

- Full extension
- Load bearing: 40kg
- Alu metallic finish
- Tipmatic opening system:
Open cabinets without handles.
Door will open smoothly by pushing any part of the drawer front.
- Mechanical function
Catch guarantees secure closing
- Adjusting of front face gap 4(+2/-1)mm possible
- Integrated manual opening system:
No damage of Tipmatic system when opening the drawer manually
- Excellent synchronisation of runners
- Specially adapted roller cage
Vertical and horizontal nylon runners provide precise stability and movement
- Die-cast front brackets
- Two dimensional front and height adjustment
- Deep version suitable for 182mm wooden back
- Drawer sides include cover caps
- To release door anywhere on the front please leave at least a 4mm front face gap.
Maximum carcass width: 1,200mm
Maximum drawer front height: 300mm
- Drawer fronts higher than 300mm do need bigger gap



Dynamic XP drawer sides H95 Alu-Metallic

Length	Art no	Pack Qty
275	F090 075 281	1
400	F090 075 289	
450	F090 075 293	
500	F090 075 297	

Dynamic XP Tipmatic Plus Runners

Length mm	Drawer Depth mm	Min. Fitting Depth mm	Art. No.	Pack Qty
275	265	299	F091 075 464	1
400	390	424	F091 075 466	
450	440	474	F091 075 467	
500	490	524	F091 075 468	

Rail for deep version

Length mm	Art. No.	Pack Qty
400	F092 075 878	1
450	F092 075 881	
500	F092 075 884	

Description	Art no	Pack Qty
Screw front fixing	F092 083 116	2*
XP adapter wooden back h86	F092 082 925	1
XP adapter wooden back H182	F092 082 943	
Tipmatic plus locking device	F092 083 209	
Cut down synornisation bar	F102 068 272	

*Please note quantity
2 is necessary to
complete set.